



Pony Testing International Group

Test Report

NO.: MDCXOVZN56988704

Date: Mar 31, 2016

Page 1 of 4

Applicant: Alent Alpha Metals (Shenzhen) Co., Ltd

The following sample(s) was/were submitted and identified on behalf of the client as:

Sample Name: 42Sn57.6Bi0.4AgOM520(CVP520) Solder Paste

Manufacturer: Alent Alpha Metals (Shenzhen) Co., Ltd

Lot No.: 20909476WL

Sample Received Date: Mar 26, 2016

Testing Period: Mar 26, 2016 TO Mar 31, 2016

Reference Requested: RoHS Directive 2011/65/EU & (EU)2015/863 Annex II

Reference Method:

- (1) IEC 62321-5 Edition 1.0:2013 method, Lead Analysis is performed by AAS
- (2) IEC 62321-5 Edition 1.0:2013 method, Cadmium Analysis is performed by AAS
- (3) IEC 62321-4 Edition 1.0:2013 method,
Mercury Analysis is performed by ICP-OES
- (4) IEC 62321 Edition 1.0:2008 method,
Hexavalent Chromium Analysis is performed by UV-Vis
- (5) IEC 62321-6 Edition 1.0:2015 method,
PBBs and PBDEs Analysis is performed by GC-MS

Test Result: Please refer to next page(s)

Approved by:

Code: xpyd67a4



www.ponytest.com ☎ Hotline 400-819-5688

BeijingLab: (010) 82618116 ChangchunLab: (0431) 85150908 ShanghaiLab: (021) 64851999 ShenzhenLab: (0755) 26050909
QingdaoLab: (0532) 88706866 DalianLab: (0411) 84650820 NingboLab: (0574) 87736499 GuangzhouLab: (020) 89224310
TianjinLab: (022) 27360730 ZhengzhouLab: (0371) 69350670 HangzhouLab: (0571) 87219096 WuhanLab: (027) 83997127

Test Report

NO.: MDCXOVZN56988704

Date: Mar 31, 2016

Page 2 of 4

Test Result (Unit: mg/kg)

Test Item	MDL	Test Result	RoHS Limit
Lead (Pb)	1	40.6	1000
Cadmium (Cd)	1	N.D.	100
Mercury (Hg)	1	N.D.	1000
Hexavalent Chromium (Cr ⁶⁺)	1	N.D.	1000
Sum of PBBs	—	N.D.	1000
Bromobiphenyl	5	N.D.	—
Dibromobiphenyl	5	N.D.	—
Tribromobiphenyl	5	N.D.	—
Tetrabromobiphenyl	5	N.D.	—
Pentabromobiphenyl	5	N.D.	—
Hexabromobiphenyl	5	N.D.	—
Heptabromobiphenyl	5	N.D.	—
Octabromobiphenyl	5	N.D.	—
Nonabromobiphenyl	5	N.D.	—
Decabromobiphenyl	5	N.D.	—
Sum of PBDEs	—	N.D.	1000
Bromodiphenyl ether	5	N.D.	—
Dibromodiphenyl ether	5	N.D.	—
Tribromodiphenyl ether	5	N.D.	—
Tetrabromodiphenyl ether	5	N.D.	—
Pentabromodiphenyl ether	5	N.D.	—
Hexabromodiphenyl ether	5	N.D.	—
Heptabromodiphenyl ether	5	N.D.	—
Octabromodiphenyl ether	5	N.D.	—
Nonabromodiphenyl ether	5	N.D.	—
Decabromodiphenyl ether	5	N.D.	—

Note: (1) mg/kg = ppm

(2) "—" = Does not stipulate

(3) N.D. = Not Detected (<MDL)

(4) MDL = Method Detection Limit

(5) The most allowable limit value reference to RoHS Directive 2011/65/EU & (EU)2015/863 Annex II



www.ponytest.com ☎ Hotline 400-819-5688

BeijingLab: (010) 82618116 ChangchunLab: (0431) 85150908 ShanghaiLab: (021) 64851999 ShenzhenLab: (0755) 26050909
QingdaoLab: (0532) 88706866 DalianLab: (0411) 84650820 NingboLab: (0574) 87736499 GuangzhouLab: (020) 89224310
TianjinLab: (022) 27360730 ZhengzhouLab: (0371) 69350670 HangzhouLab: (0571) 87219096 WuhanLab: (027) 83997127

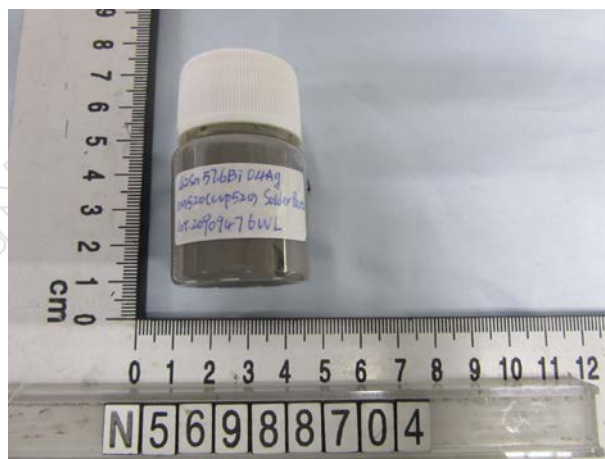
Test Report

NO.: MDCXOVZN56988704

Date: Mar 31, 2016

Page 3 of 4

Sample No. & Photo:



Pony authenticate the photo on original report only



www.ponytest.com ☎ Hotline 400-819-5688

BeijingLab: (010) 82618116	ChangchunLab: (0431) 85150908	ShanghaiLab: (021) 64851999	ShenzhenLab: (0755) 26050909
QingdaoLab: (0532) 88706866	DalianLab: (0411) 84650820	NingboLab: (0574) 87736499	GuangzhouLab: (020) 89224310
TianjinLab: (022) 27360730	ZhengzhouLab: (0371) 69350670	HangzhouLab: (0571) 87219096	WuhanLab: (027) 83997127

Test Report

NO.: MDCXOVZN56988704

Date: Mar 31, 2016

Page 4 of 4

Measurement Flow-chart

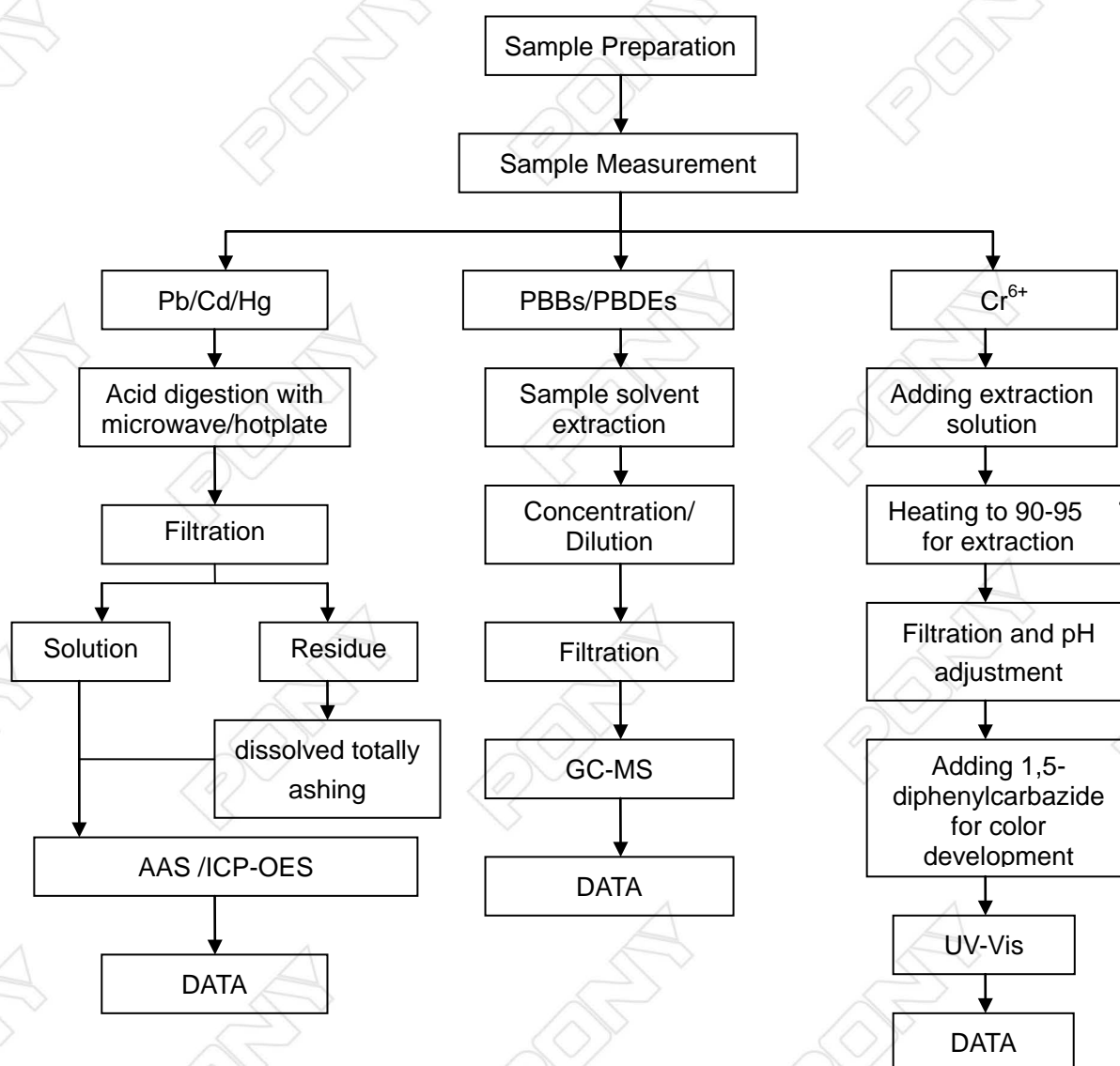
Tested by: Li Chuhua

Checked by: Yang Xin

Person in charge of the lab by: Zhao Yanyuan

These Samples Were Dissolved Totally By Pre-conditioning Method According To Below Flow Chart.

(Cr⁶⁺ And PBBs/PBDEs Test Method Excluded)



End of Report



www.ponytest.com ☎ Hotline 400-819-5688

BeijingLab: (010) 82618116 ChangchunLab: (0431) 85150908 ShanghaiLab: (021) 64851999 ShenzhenLab: (0755) 26050909
QingdaoLab: (0532) 88706866 DalianLab: (0411) 84650820 NingboLab: (0574) 87736499 GuangzhouLab: (020) 89224310
TianjinLab: (022) 27360730 ZhengzhouLab: (0371) 69350670 HangzhouLab: (0571) 87219096 WuhanLab: (027) 83997127